



DS-TL03-01

DETENTORI

Lockshields

Serie Tondera light

Detentori utilizzabili per la regolazione e l'intercettazione dei fluidi negli impianti di riscaldamento.

Tutti i detentori sono dotati di codolo con autotenuta in gomma per facilitare l'installazione.

Lockshields for the regulation and interception of fluids in heating systems. All the lockshields are equipped with a tailpiece with rubber self-sealing to facilitate the installation.

ART. 0763 0767

Detentori attacco per tubo rame e multistrato
Lockshields, connection for copper and multilayer tubes

ART. 0775 0779

Detentori attacco per tubo ferro
Lockshields, iron tube connection



Detentori a squadra
Angled lockshields

Detentori via diritta
Straight lockshields



PRESTAZIONI

Fluidi d'impiego	Acqua, soluzioni glicolate
Percentuale di glicole max	30%
Max pressione d'esercizio	10 bar
Max Temp. d'esercizio	100°C

PERFORMANCE

<i>Employed fluids</i>	<i>Water, antifreeze solutions</i>
<i>Max. percentage of glycol</i>	<i>30%</i>
<i>Max working pressure</i>	<i>10 bar</i>
<i>Max working temperature</i>	<i>100°C</i>

MATERIALI E CARATTERISTICHE TECNICHE

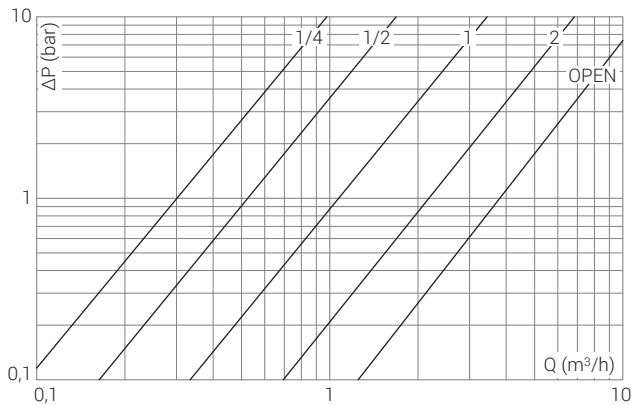
Corpo	Ottone stampato: CW617N UNI EN 12165
Calotta	
Componenti interni	Ottone trafilato: CW614N UNI EN 12164
Cappuccio detentore	ABS
Elementi di tenuta	Gomma EPDM PEROX

MATERIALS AND TECHNICAL FEATURES

<i>Body</i>	<i>Pressed brass: CW617N UNI EN 12165</i>
<i>Nut</i>	
<i>Inside components</i>	<i>Extruded brass: CW614N UNI EN 12164</i>
<i>Lockshield cap</i>	<i>ABS</i>
<i>Seal elements</i>	<i>EPDM PEROX rubber</i>

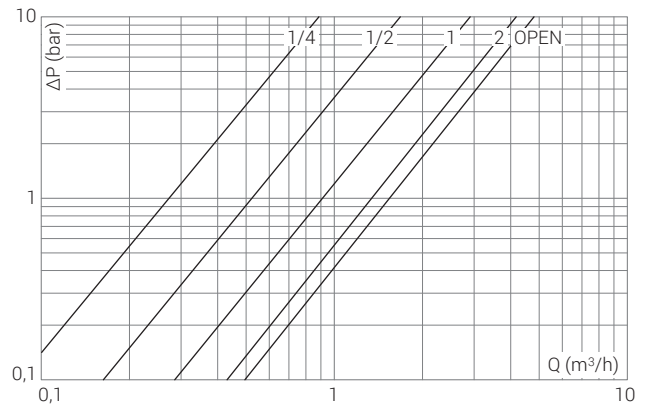
Diagrammi *Diagrams*

0763 0775 Detentori a squadra
Angled lockshields



POS	1/4	1/2	1	2	OPEN
Kv	0,3	0,52	1,07	2,20	3,89

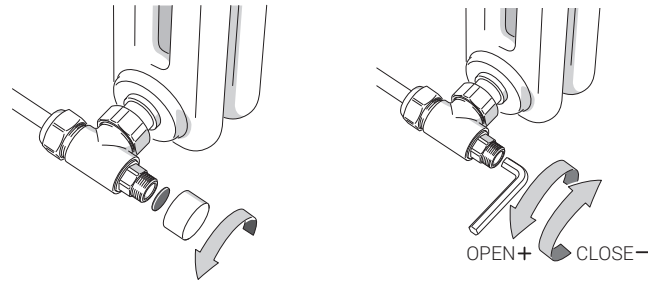
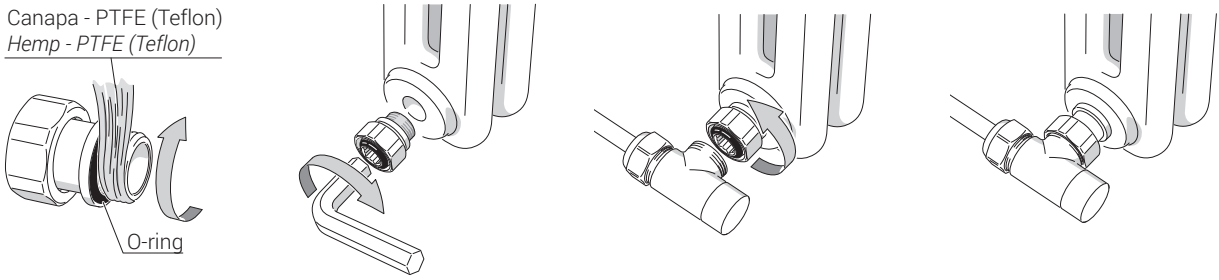
0767 0779 Detentori via dritta
Straight lockshields



POS	1/4	1/2	1	2	OPEN
Kv	0,27	0,53	0,93	1,43	1,56

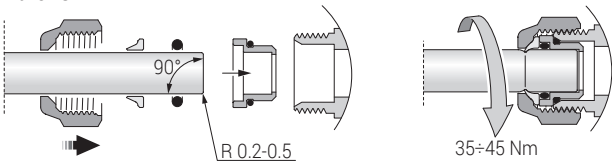
Istruzioni Instructions

Canapa - PTFE (Teflon)
Hemp - PTFE (Teflon)

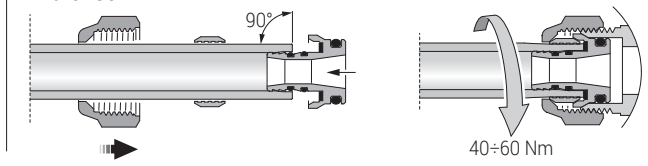


Installazione raccordi Connection installation

Art. 0481

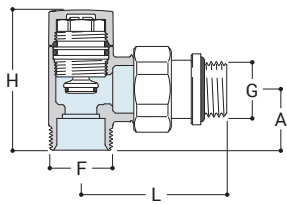


Art. 0483



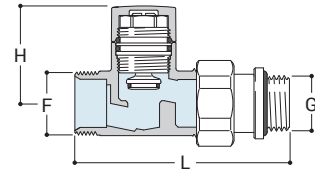
Disegni Drawings

0763



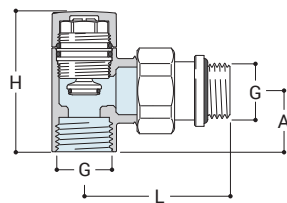
G	F	H	A	L
1/2"	24x19	53	23	55

0767



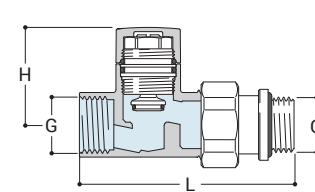
G	F	H	L
1/2"	24x19	37	81

0775



G	H	A	L
1/2"	53	23	55

0779



G	H	L
1/2"	37	81



0481

Raccordo per tubo rame a tenuta O-Ring.

Copper tube connection with O-ring seal.



0483

Raccordo per tubo multistrato.

Multilayer tube connection.



0301

Adattatore 1/2" F x 24/19 F

Adaptor 1/2" F x 24/19 F.



0027

Prolunga per valvole (30 mm).

Extension for radiator valves (30 mm)



0030

Eccentrico per radiatori.

Cam for radiators.



0402

Codolo telescopico

Telescopic tailpiece



0031

Raccordo 1/2" con tubo saldato ø 15 mm.

1/2" connection with welded pipe ø 15 mm.



0490

Rosetta

Wall plate



0491

Kit copritubo tondo (2 pezzi).

Round pipe cover set (2 pcs).



A491

Kit di collegamento con rosoni tondi (2 pezzi), ø 15 mm, lunghezza 150 mm x 1/2".

Round connection set (2 pcs), ø 15 mm, length 150 mm x 1/2"