



DS-PL02-01

VALVOLE MANUALI

Manual radiator valves

Serie Planet

Valvole manuali utilizzabili per l'intercettazione dei fluidi negli impianti di riscaldamento. Tutte le valvole sono dotate di codolo con autotenuta in gomma per facilitare l'installazione.

Manual radiator valves for the interception of fluids in heating systems. All the valves are equipped with a tailpiece with rubber self-sealing to facilitate the installation.

ART. 0235 0236

Valvole manuali attacco per tubo rame e multistrato
Manual radiator valves, connection for copper and multilayer tubes

ART. 0225 0226

Valvole manuali attacco per tubo ferro
Manual radiator valves, iron tube connection



Valvole a squadra
Angled radiator valves

Valvole via diritta
Straight radiator valves



PRESTAZIONI

Fluidi d'impiego	Acqua, soluzioni glicolate
Percentuale di glicole max	30%
Max pressione d'esercizio	10 bar
Max Temp. d'esercizio	100°C

PERFORMANCE

Employed fluids	Water, antifreeze solutions
Max. percentage of glycol	30%
Max working pressure	10 bar
Max working temperature	100°C

MATERIALI E CARATTERISTICHE TECNICHE

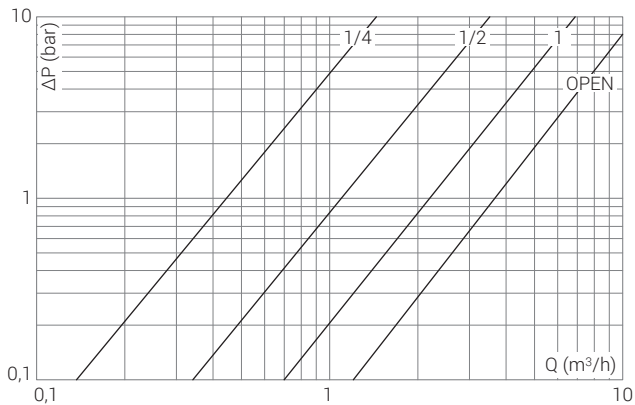
Corpo	Ottone stampato: CW617N UNI EN 12165
Calotta	
Componenti interni	Ottone trafilato: CW614N UNI EN 12164
Volantino	ABS
Elementi di tenuta	Gomma EPDM PEROX

MATERIALS AND TECHNICAL FEATURES

Body	Pressed brass: CW617N UNI EN 12165
Nut	
Inside components	Extruded brass: CW614N UNI EN 12164
Handwheel	ABS
Seal elements	EPDM PEROX rubber

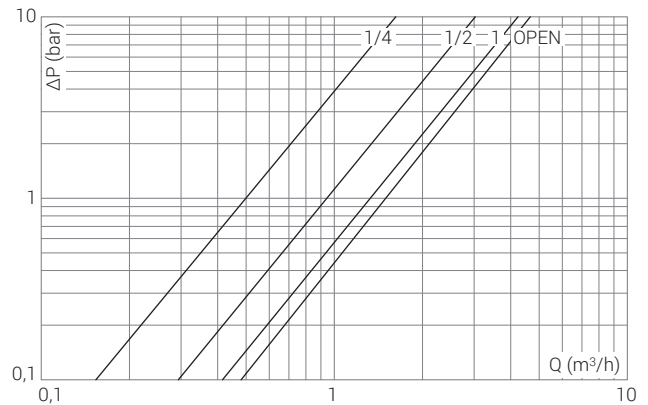
Diagrammi Diagrams

0235 0225 Valvole a squadra
Angled radiator valves



POS	1/4	1/2	1	OPEN
Kv	0,46	1,13	2,21	3,83

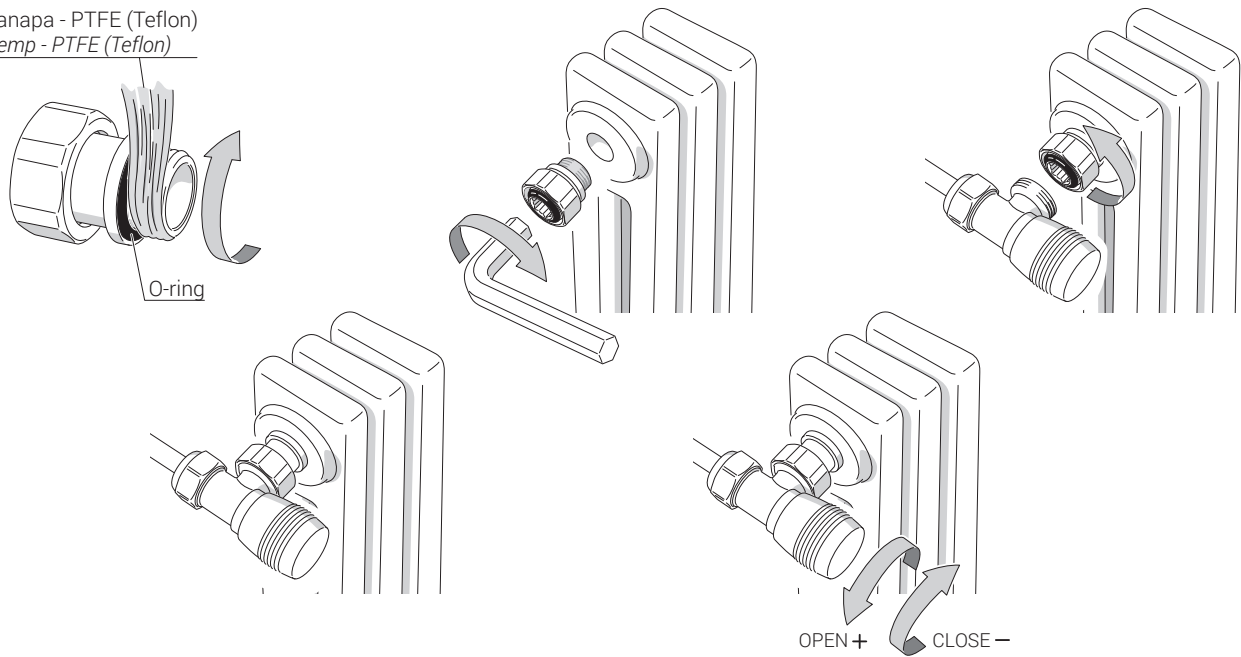
0236 0226 Valvole via dritta
Straight radiator valves



POS	1/4	1/2	1	OPEN
Kv	0,50	0,92	1,41	1,54

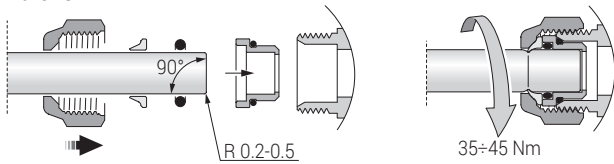
Istruzioni *Instructions*

Canapa - PTFE (Teflon)
Hemp - PTFE (Teflon)

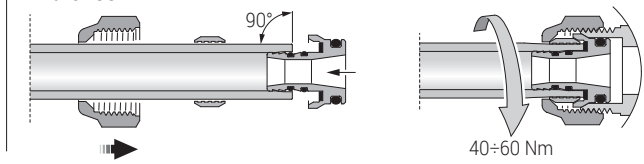


Installazione raccordi *Connection installation*

Art. 0481

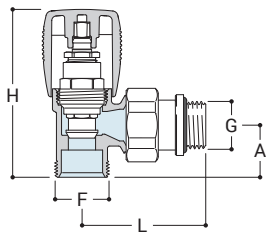


Art. 0483



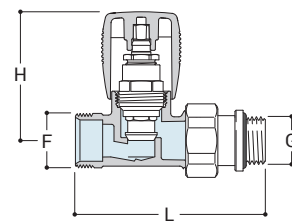
Disegni *Drawings*

0235



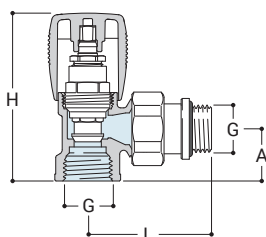
G	F	H	A	L
3/8"	24x19*	74	23	55
1/2"	24x19*	74	23	55

0236



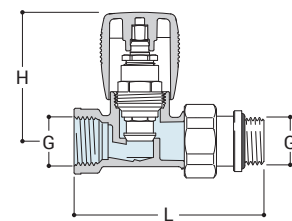
G	F	H	L
3/8"	24x19*	57	84
1/2"	24x19*	57	84

0225



G	H	A	L
3/8"	74	23	55
1/2"	74	23	55

0226



G	H	L
3/8"	57	84
1/2"	57	84

* = 3/4" E



0481

Raccordo per tubo rame a tenuta O-Ring.
Copper tube connection with O-ring seal.



0483

Raccordo per tubo multistrato.
Multilayer tube connection.



E481 EUROCONO

Raccordo per tubo rame a tenuta O-Ring.
Copper tube connection with O-ring seal.



E483 EUROCONO

Raccordo per tubo multistrato.
Multilayer tube connection.



0301

Adattatore 1/2" F x 24/19 F.
Adaptor 1/2" F x 24/19 F.



0027

Prolunga per valvole (30 mm).
Extension for radiator valves (30 mm)



0030

Eccentrico per radiatori.
Cam for radiators.



0402

Codolo telescopico
Telescopic tailpiece



0031

Raccordo 1/2" con tubo saldato ø 15 mm.
1/2" connection with welded pipe ø 15 mm.



0490

Rosetta
Wall plate



0491

Kit copritubo tondo (2 pezzi).
Round pipe cover set (2 pcs).



A491

Kit di collegamento con rosoni tondi (2 pezzi), ø 15 mm, lunghezza 150 mm x 1/2".
Round connection set (2 pcs), ø 15 mm, length 150 mm x 1/2"