

Motor actuator

1049-230V ; 1049-024V

Warnings

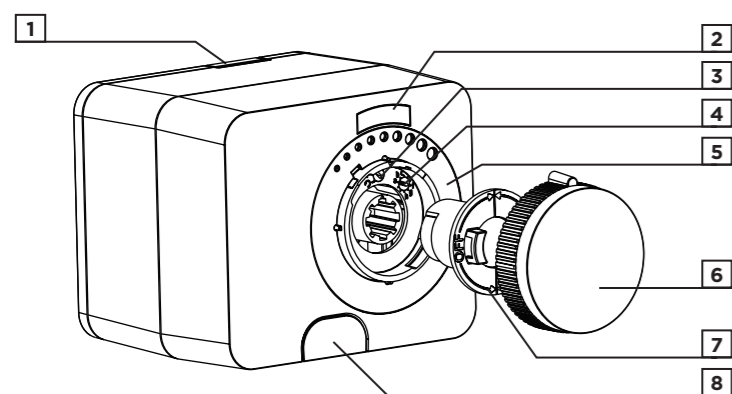
Installation and electrical connection should only be carried out by a person with suitable qualification. When installing, it is necessary to follow the rules of the profession, valid legislation and regulations. When installing, make sure that the actuator is mounted away from open sources of fire or water. If there is a possibility of flooding, the actuator must be installed above the possible level of the flood water level. Any interference with the actuator not described in the manual is forbidden. Before installing the actuator, make sure that the parts in contact with the actuator and the installer are not under voltage.

The operator or the system user is responsible for the selection of a qualified person that will perform the installation of the actuator. The user is also responsible for the proper operation and maintenance of the system.

Failure to follow the instructions and unprofessional work may result in the following:

- actuator malfunction
- endangering the safe operation of the system
- damage to the system
- risk of electric or mechanical shock for persons in contact with the system

Introduction



1 Button for mounting and dismantling the actuator on the valve.

2 Actuator operation indicator.

Rotating the actuator counterclockwise. The light illuminates at half brightness when the motor actuator is in end position.

Rotating the actuator clockwise. The light illuminates at half brightness when the motor actuator is in end position.

The clutch is activated

Status of additional switch and modulating actuator. The status has several states:

The green light is on. The actuator is operating normally.¹

The green light flashes. No signal / broken control line.¹ (Only available when 2-10 V or 4-20 mA control signal is selected).¹

The red light is on. The additional switch is activated.²

The red light flashes. The actuator cannot overcome the load of the valve.¹

The red light flashes every 5 seconds. A valve blockage was detected but is no longer present.¹ The display is reset by pressing the button or by restarting the power supply of the motor actuator.

3 Button to set the actuator opening direction.²

4 Button to set the actuator operating mode.¹

5 Scale to set the valve position display.

6 Mixing valve manual positioning button.

7 Ring for additional switch.³

8 Button (clutch) for manual operation mode.

¹ Only for modulating actuators.

² Only for modulating and 2-point actuators with or without additional switch.

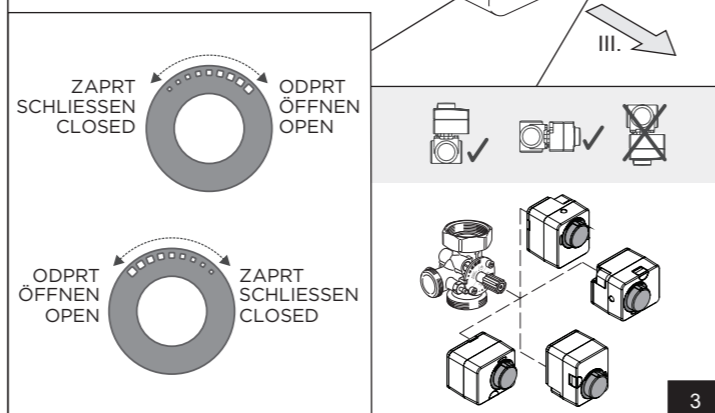
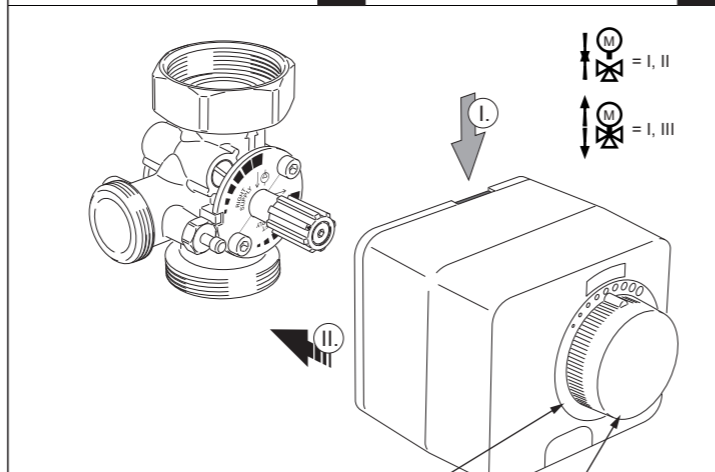
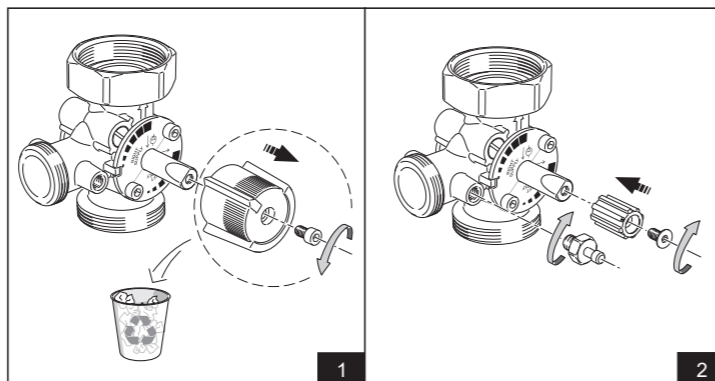
³ Only for 2- and 3-point actuators with additional switch.

Product installation

1. Turn the valve to the middle position or to the middle between open and closed positions. Remove the manual positioning button from the valve axis and screw on the actuator axis adapter.

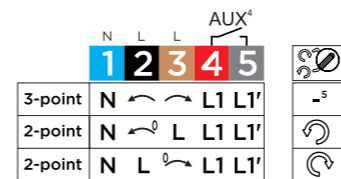
2. Tighten the locking screw to the intended location on the valve.

3. On the actuator, press the actuator mount button and plant it on the valve axis. Remove the manual positioning button and the scale ring from the actuator. Use a flathead screwdriver to remove the ring. Set the ring for the scale or the direction of opening and closing the valve and return it to the actuator. Lastly, return the manual positioning button. Disassemble the actuator by holding down the button for mounting the actuator and pulling it from the valve.

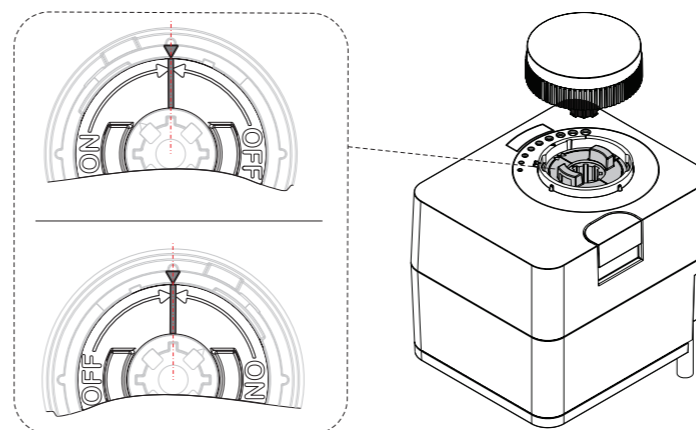


Electrical connection and setting

2- AND 3-POINT ACTUATOR WITH OR WITHOUT ADDITIONAL SWITCH

Adjusting the position of the additional switch ⁴

To turn on the additional switch, press the button and turn the manual positioning button to the position where the additional switch is to be activated. Press the button again and remove the manual positioning button. By rotating the ring for the additional switch, set the activating point of the additional switch. Align one of the two indicators separating the ON and OFF fields on the ring with the triangular mark on the motor actuator cover. In the ON field, the additional switch is activated, in the OFF field, the additional switch is deactivated. After the setting, return the manual positioning button back to the actuator.



⁴ Only for 2- and 3-point actuators with additional switch.

⁵ Unavailable.

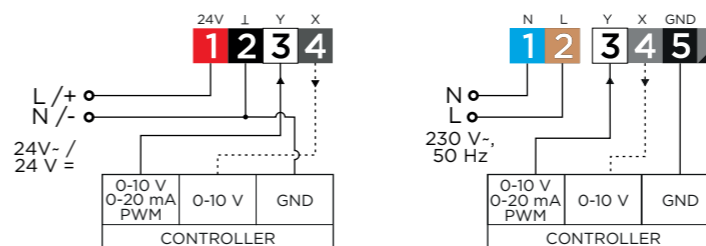
Setting the valve opening direction

The direction of opening the valve is set with the button .

The symbol means opening counterclockwise.

The symbol means opening clockwise.

MODULATING ACTUATOR 24V AND 230V



Remove the manual valve positioning button before starting the setup.

Setting the valve opening direction

The direction of opening the valve is set with the button .

The symbol means opening counterclockwise.

The symbol means opening clockwise.

Setting the operation of the actuator with a supply voltage of 24 V

The operation of the actuator is set by selecting the function or combination of control signal and actuator speed.

The desired mode of operation is selected with the button .

The combination of control signal and actuator speed is described in the table.

Signal (Y)	0÷10V	2÷10V	0÷20mA	4÷20mA	PWM
60	a	c	e	g	i
120	b	d	f	h	j

Setting the operation of the actuator with a supply voltage of 230 V

The operation of the drive is set by selecting the function or control signal with the button . Possible control signals are described in the table.

0÷10V	2÷10V	0÷20mA	4÷20mA	PWM
a, b	c, d	e, f	g, h	i, j

After the settings, return the manual positioning button back to the actuator.

Manual operating mode

To activate the manual operating mode, press the button . The LEDs on the actuator and are on. Now you can turn the valve to any position by turning the manual positioning button. Switch off manual operation by pressing the button .

Removing old electrical and electronic equipment



Disposal of old electrical and electronic equipment (Applies to the Member States of the European Union and other European countries with a separate waste collection system).

This symbol on the product or packaging marks that it should not be discarded as household waste. It needs to be taken to a collection point for waste electrical and electronic equipment (WEEE). Suitable disposal of this product prevents negative effect on the environment and health which could otherwise be caused by its unsuitable disposal. Recycling of material reduces usage of new raw materials. For more information on recycling of this product, contact the competent authorities, municipal service or the store where you purchased the product.

Technical data

Characteristic	Value
Torque	5/10/15 Nm (see data on the actuator)
Rotational speed	12/24/60/120/240/480 s (see data on the actuator)
Rotation angle	90°
Power supply	2 in 3 point: 24 V - / 230 V - (see data on the actuator) modulating: 24 V = / 24 V -
Control signal	2-point, 3-point, modulating (0 ÷ 10V / 0 ÷ 20mA / PWM)
Protection level	IP42
Protection class	II according to EN60730-1 (actuators with 230 V - supply) III according to EN60730-1 (actuators with 24 V = / 24 V - supply)
Dimensions [WxHxD]	95 x 80 x 92 mm
Housing	PC, thermoplastic
Ambient temp.	0 ÷ 50 °C
Weight	487 ÷ 965 g

Copyright © 2024 SR RUBINETTERIE

This user manual is protected by copyright laws.

No part of this document may be reprinted, reproduced, translated or copied to a system used for storage and retrieval of data by electronic or mechanical means, photocopying, recording or storing without the written permission of SR Rubinetterie. We reserve the right to make changes or errors.

SR RUBINETTERIE Srl
Via Monte Fenaria 105
13018 VALDUGGIA
Italy

